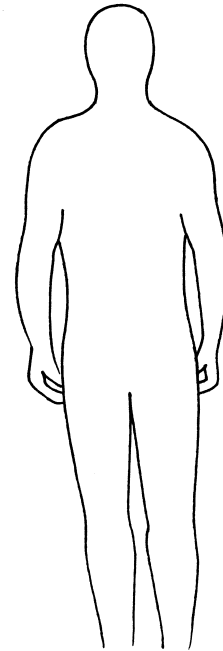


Name _____

Class _____

- 1 a** Draw in the following features on the outline body.

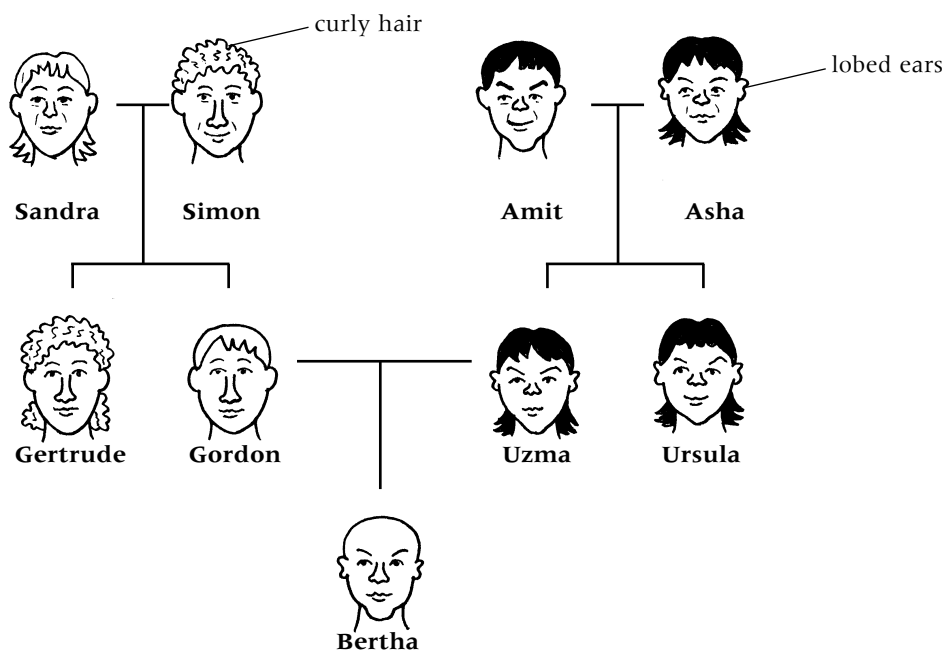
curly hair
 a scar on the face
 blue eyes
 an earring
 fashionable clothes
 lobes at the bottom of the ears
 large feet



- b** Label each feature that is *inherited* on the left hand side.

- 2** Inherited features are passed on from parents to offspring. The drawing below shows a family tree. The straight horizontal lines *between* the faces show people who have had children together.

Look at the family tree below and then answer the questions.





- a** Who were Ursula's parents? _____
- b** What relationship to each other are Gertrude and Gordon? _____

- c** Who has Uzma inherited her lobed ears from? _____
- d** Who has Gertrude inherited her curly hair from? _____
- e** Do you think Bertha has curly or straight hair? _____
- f** Explain your answer to part **e**. _____

- g** If Amit and Sandra had a child together, predict what hair and ears the child would have. _____

S knowledge