

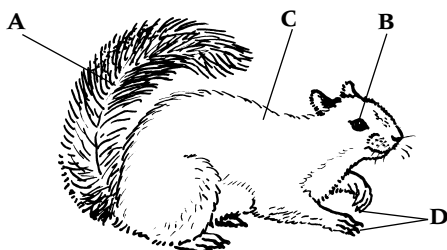
On your answer sheet, write in or circle the correct letter for each question.

## 7Ca

- What is the area where a polar bear lives called?
  - the igloo
  - the desert environment
  - the Arctic habitat
  - the winter habitat
- The conditions in an environment are caused by:
  - physical environmental factors.
  - summer factors and winter factors.
  - day factors and night factors.
  - only animal factors.
- What does the word 'adapted' mean?
  - A living thing is well suited to where it lives.
  - A living thing is not suited to where it lives.
  - A living thing cannot survive on its own.
  - A plant that can live on the top of a mountain.
- What does the word 'distribution' mean?
  - Where organisms are found in a habitat.
  - The total number of organisms living in a habitat.
  - The different species that live in a habitat.
  - The different tribes that live in a habitat.

## 7Cb

- The drawing shows a squirrel. Which feature shows that it is adapted to climbing vertical tree trunks?



- One of the most important adaptations for organisms living in hot, dry areas is:
  - to wash regularly.
  - to not waste any water.
  - to have thick hair.
  - to have sharp claws.
- Polar bears live in the Arctic. Why is their fur white?
  - White is the best colour for keeping cool.
  - Otherwise they would get muddled up with brown bears.
  - White is the best colour for keeping warm.
  - They are not seen easily by animals that they hunt.
- One way in which fish are adapted to their habitat is:
  - they breathe using gills.
  - they breathe using air holes.
  - they can be caught using a hook and a worm.
  - they die of old age or disease.

## 7Cc

- Which of these is a seasonal change?
  - It is warmer during the day.
  - It is dark at night.
  - It is colder in winter.
  - A daisy flower opens and closes again.
- What does the word 'nocturnal' mean?
  - Things that are cold.
  - Animals that go to sleep for the winter.
  - Organisms that are active at night.
  - Plants that lose their leaves in winter.
- What does a rabbit do when winter comes?
  - It hibernates.
  - It migrates.
  - It grows thicker fur.
  - It dies.

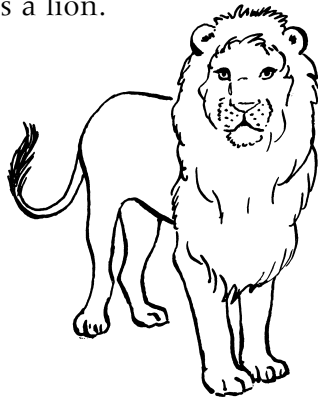
- 4 What is a deciduous tree?
- A A tree that loses its leaves in winter.
  - B A tree that keeps its leaves in winter.
  - C A tree that never photosynthesises and only respire in summer.
  - D A tree that grows extremely tall in cold weather.

7Cd

- 1 A herbivore is:
- A an animal that only eats plants.
  - B an animal that only eats other animals.
  - C an animal that eats both plants and animals.
  - D a plant that eats other plants.

- 2 The drawing shows a lion.

Which feature of the lion is common to many predators but *not* to many prey?

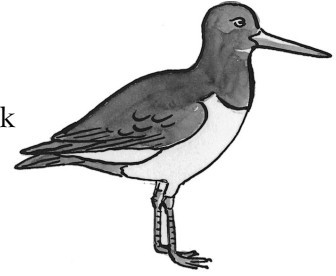


- A It has legs.
  - B It has forward facing eyes.
  - C The colour of its hair camouflages it.
  - D It has good eyesight.
- 3 Which feature of this animal suggests that it is prey for larger animals?



- A It has spines on its body.
- B It has a long nose.
- C It comes out at night.
- D It feeds on insects.

- 4 This bird lives on the sea shore. Look at its beak. What do you think it feeds on?



- A large fish
- B shellfish buried deep in the sand
- C seaweed
- D shellfish attached to the rocks

7Ce

- 1 Which of these food chains is the correct way to show grass being eaten by rabbits, and rabbits being eaten by foxes?

- A grass ↔ rabbit ↔ fox
- B fox → rabbit → grass
- C grass ← rabbit ← fox
- D grass → rabbit → fox

- 2 In science, what is a 'consumer'?

- A Someone who watches Watchdog on television.
- B An animal that eats other organisms.
- C A plant that does not need to eat anything.
- D A plant that starts a food chain.

- 3 A gardener found that something had been eating his lettuces. Which of the following pieces of evidence is the best to show that rabbits were responsible?

- A The gardener knows rabbits live in the area.
- B The lettuces were eaten at night.
- C There are rabbit droppings near the lettuces.
- D The man at the pub said it must be rabbits.

- 4 Which of these things do plants compete for?

oxygen   water   heat   light

- A all of them
- B only oxygen
- C oxygen and heat
- D water and light