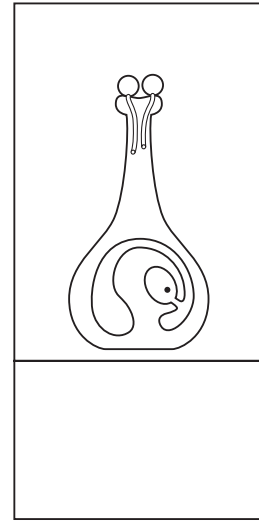
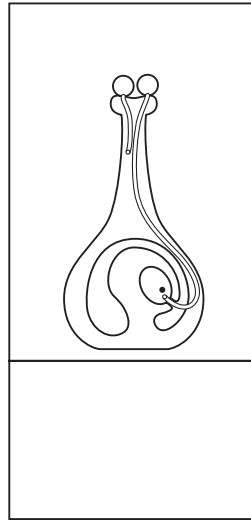
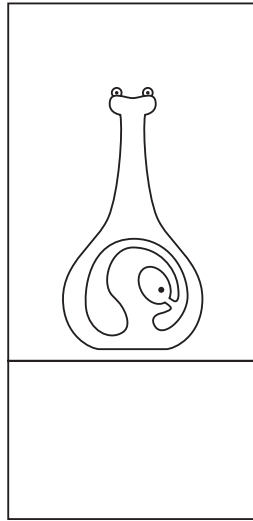
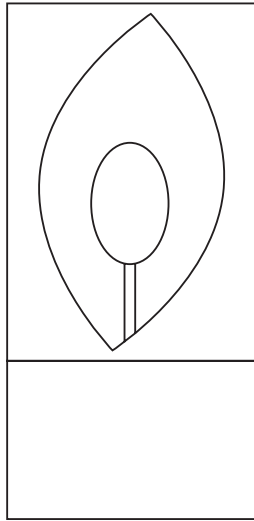


# Pollination and fertilisation

- 1 Look at the pictures below. Write numbers on the lines above each picture to show the correct order in which pollination and fertilisation happen.



The male nucleus from the pollen joins the nucleus in the egg cell. This is **fertilisation**.

An embryo forms. It is found inside a seed inside a fruit.

The pollen grain grows a pollen tube. It grows towards the egg cell.

The pollen grain lands on the stigma. This is **pollination**.

- 2 Draw lines from the 'label boxes' above to indicate what each picture shows.

- 3 On the diagrams label each of the following parts once.

egg cell    fruit    ovary    pollen grain  
pollen tube    seed    stigma    style

**S** knowledge, literacy