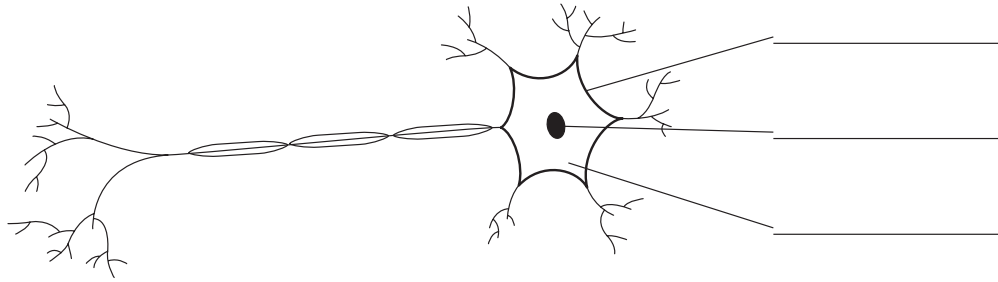


# Cells, tissues, organs and systems

Name \_\_\_\_\_ Class \_\_\_\_\_

**?** 1 a Label the parts of this cell.



b Which type of **tissue** does this cell form? \_\_\_\_\_

c Which **organ** might this tissue be found in? \_\_\_\_\_

d Which **organ system** would this organ be found in? \_\_\_\_\_

2 Which organ system:

a carries oxygen and food around the body? \_\_\_\_\_

b breaks down food? \_\_\_\_\_

c takes oxygen out of the air? \_\_\_\_\_

d carries messages around the body? \_\_\_\_\_

3 In the following sentences, *one* organ is not correct. Put a cross through the wrong organ and write the name of the correct one in the space.

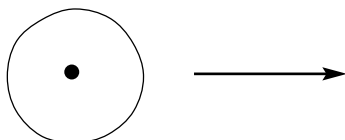
a The breathing system contains the lungs and intestines. \_\_\_\_\_

b The nervous system contains the brain and the little toe. \_\_\_\_\_

c The circulatory system contains the liver and blood vessels. \_\_\_\_\_

4 The drawing shows an animal cell.

a Draw two or three more diagrams to show the steps taken when this cell splits into two.



b What is the name of this process? \_\_\_\_\_

c What are the two new cells called? \_\_\_\_\_