

Name \_\_\_\_\_ Class \_\_\_\_\_



1 Fill in the missing words in the sentences below.

Use the words in the box.

Plants have some special cells.

a Some cells help to carry water around the plant.

These are called \_\_\_\_\_ cells.

b Some plant cells help to take water out of the ground.

These are called \_\_\_\_\_  
\_\_\_\_\_ cells.c A group of the same type of cells, all working together,  
is called a \_\_\_\_\_.

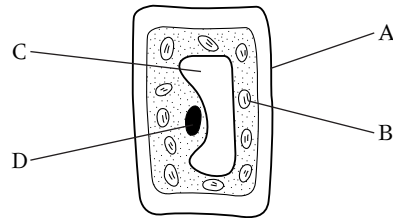
hair

root

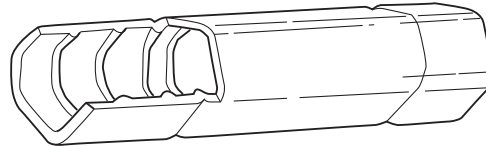
tissue

xylem

2 Here is a palisade cell.

It helps the plant to make  
food. Which part of the  
cell does this? Circle the  
correct letter.

3 Here is a xylem cell.

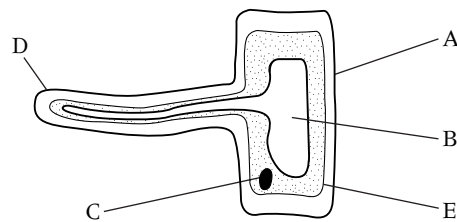
Which feature of the cell  
helps it do its job?  
\_\_\_\_\_.

4 Here is a root hair cell.

a Which part of the cell

helps it do its job?

Circle the correct letter.

b On this drawing, what are the names of the parts  
labelled A, B and C?

i A is the \_\_\_\_\_.

ii B is the \_\_\_\_\_.

iii C is the \_\_\_\_\_.

**S** literacy, knowledge