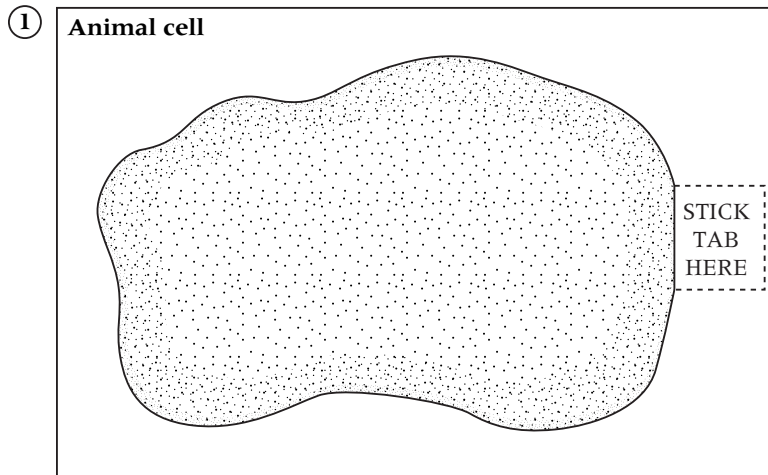


Building animal cells

- 1 Cut out the outline of the animal cell and the different parts. Stick the parts into the correct places on the outline. Stick the outline into your book.
- 2 Label the cytoplasm, cell surface membrane and nucleus.

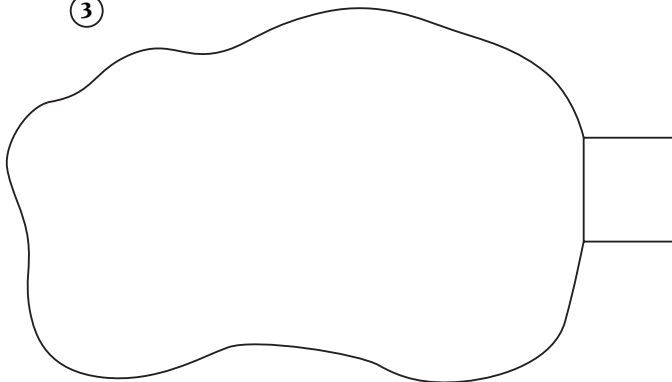


②



CUT THIS OUT AND
STICK IT INTO THE
CORRECT PART OF
THE CELL

③



TO COMPLETE YOUR CELL
CUT THIS SHAPE OUT AND
STICK THE TAB ONLY ON
THE SPACE MARKED
'STICK TAB HERE'

S knowledge

